



#### Name of Vessel

ACV Shadowfax  
Seven Mile Shipping Ltd, London, UK

#### PRINCIPAL PARTICULARS

**Port of Registry / Flag**  
TBA / TBA  
**IMO NO** 9571703  
**Call Sign** TBA  
**Year Built** 2013  
**Classification** Lloyds Register  
**Type** Air Cushion Vehicle

#### DIMENSION WHEN HOVERING

**Height** 5.5m  
**Length** 22.52m  
**Beam** 11m

#### DIMENSIONS FOR SHIPPING & TRANSPORTATION

**Length – with skirt deflated** 19.9m  
**Width – side bodies removed** 5.6m  
**Maximum Payload** 8 tonnes

#### PERFORMANCE

**Speed** up to 40 Knots  
(subject to sea state/weather)  
**Max endurance with standard tanks**  
10 hours  
**Obstacle Clearance** 1.0m  
**Worse intended maximum wave height above hump speed** 1.8m  
**Maximum Sea State for Operations** 4  
**Power per engine** 735kw  
**Maximum fuel capacity** 3,600 litres  
**Maximum usable fuel capacity**  
2,700 litres  
**Maximum consumption at 1800 RPM**  
230 l/h

#### ACCOMMODATION

**Current Configuration**  
**Rescue Mode** 42-56 pax  
**Transit/Pax** 35-40 pax  
**Minimum Crew** 2

#### MAIN CABIN

**Internal Cabin Dimensions (Max)**  
**Length** 7.4m  
**Width** 5.0m  
**Height** 1.87m

#### PROPULSION SYSTEM

**Main Engine**  
Propulsion and Lift  
2 x IVECO Vector 20 turbo charged,  
common rail injected, radiator cooled  
diesels each producing  
735kw (980hp) at 2,100 rpm  
**Temperature range of operation**  
-30°C to +45°C

#### DECK EQUIPMENT

Anchor Winch  
Anchors  
Chains  
Bollards  
Mooring Chocks

#### SAFETY, RESCUE EQUIPMENT

Life Rafts  
Life Jackets  
Sart and EPIRB  
Search Lights  
Jason's Cradle for casualty recovery  
Medical Kits  
Personal Protection Equipment for crew

#### NAVIGATIONAL/COMMUNICATIONS EQUIPMENT

VHF radio  
GPS/Chart Plotter  
Radar  
AIS  
Satellite compass  
Loud hailer  
Anemometer  
Thermal Imaging/Night Vision Equipment

#### MARINE EQUIPMENT

Lloyds approved anchor and cable  
5 x hand held cabin fire extinguishers  
1 x portable manual bilge pump  
Mooring/towing ropes  
2 x life rings  
Boat hook

#### FIRE FIGHTING EQUIPMENT

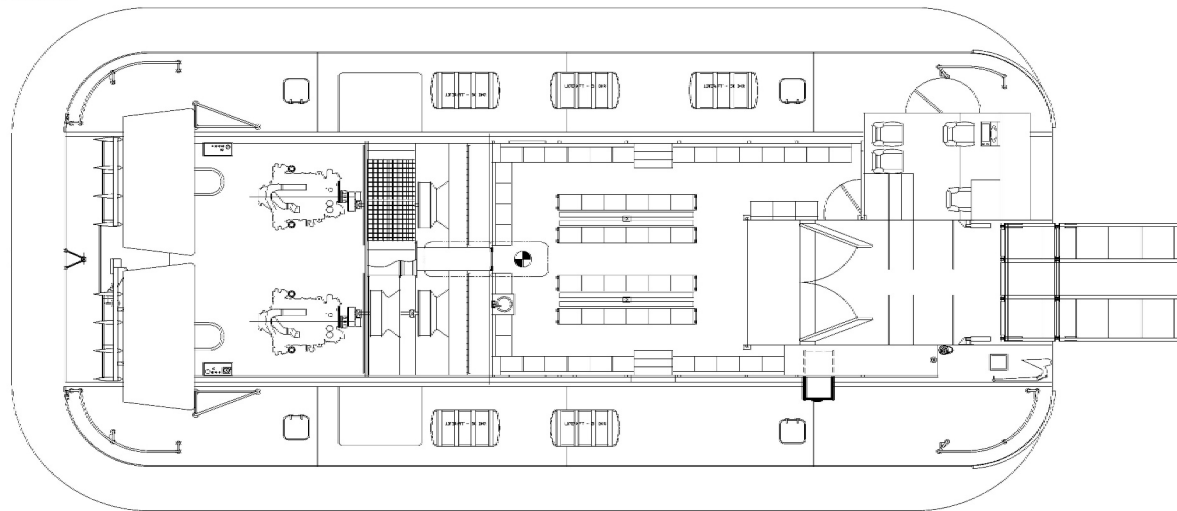
**Fire Thermal and Sound Insulation**  
Ceramic insulation is installed for structural fire protection to A30 standard in the engine bay.

In the event of an engine fire, a heat detector mounted above each engine actuates a warning lamp and a buzzer in the control cabin. Pyrotechnic fire extinguishers and fire flaps over engine bay intakes are remotely operated from the control cabin to meet HSC requirements.

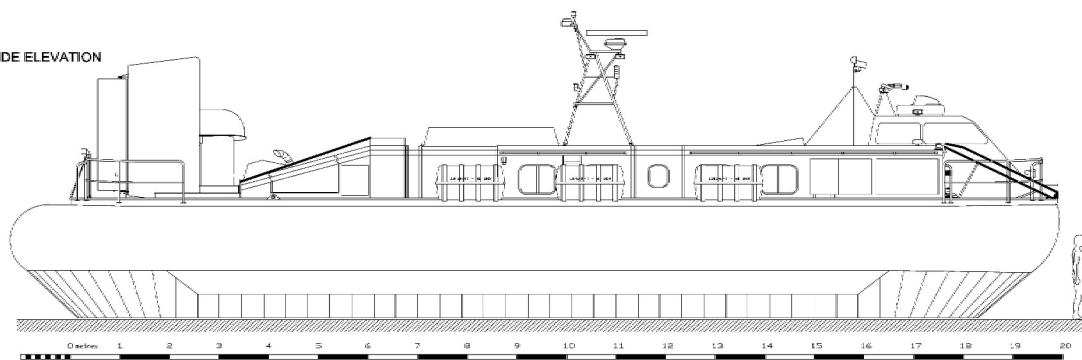
All details given in good faith and are believed to be correct, but not guaranteed.

# ACV SHADOWFAX - RESCUE MODE

PLAN VIEW



SIDE ELEVATION



VIEW ON BOW

