



Name of Vessel

CM ROSE

Port of Registry / Flag

Tb Turkmenbashi, Turkmenistan

Year of Delivery

May 2006

Type

AHTS

Classification

BV

Length over all (LOA)

59.20m

Breadth / Depth / Draft (Light / Oper/ Max)

13.80m / 5.50m / m /4.75m/ 4.75m

GRT / NRT / DWT

1212T / 383T / 1257T

Clear Deck Space / Deck Loading

400 m² (37 x 10.8) / 600 tonnes @ 5 ton/m²

Speed (Max / Econ)

15 knots / 10Knots

Bollard Pull

72 tonnes (Certified Jun 2011)

Endurance

30 days

Accommodation

Fully heated & air conditioned for 28 men. (Crew maximum 13, Passengers 15). 2 x Single, 5 x Two, 4 x Four

Lifesaving

To meet SOLAS requirements

Stand by Rescues

Inflatable FRC - 1 x Zodiac 6 person 25hp

Dry & Wet Bulk Cargo

Fuel Oil - 401.4m³ @ 90%

Fresh Water - 396.9m³

Drill Water - 90.5m³

Dry Bulk - 4 tanks total 136 m³

Liquid Mud - 160m³ with tank circulation Base

Oil/Brine/Recovered Oil - 160m³ Sewage

(Treated) - 110m³

Chill Space - 10m³

Freezer Space - 10m³

Main Engines

2 x CAT 3696 2,722bhp

Total power 5,444bhp.

Propulsion

2 x reduction gearboxes coupled to 4 bladed 2900mm diameter Berg CPP's rotating in Kort Nozzles

Auxiliary Engines

3 x Caterpillar 2803406C 245 KW each

2 x 1000W Shaft Alternators

M.E. Consumption

20000 litres MGO per 24 hours@ full power &

9000 litres MGO per 24 hours @economic

cruising speed of 11 knots.

Bow Thruster

Pump jet thruster 5t thrust

Main Air Compressor

2 Fitted

Bulk Compressor

2 Fitted 75m³/hr @ 50m head and 125m distance

Mud Pump

2 Fitted 95m³/hr @ 46m head and 125m distance

Fuel Cargo Pump

2 Fitted 100m³/hr @ 50m head

Fresh Water Cargo Pump

2 Fitted 100m³/hr @ 50m head

Cargo Metering System

Meters fitted

Main Fire Pump

Fitted

Emergency Fire Pump

Fitted

Steering Gear

Hydraulic Ram Type

Anchor Windlass

2 Fitted 10tonne

Anchor

2 Fitted

Anchor Chain

2 x 455m of 32mm Ø Studlink chain.

Capstans

2 x 5t Hydraulic

Tugger Winch

2 x 10 tonne

AHT Winch

Hydraulic Double drum Waterfall Type 150T line pull and 200T break load.

AH Drum Capacity

1000m x 58mm wire.

Towing Drum Capacity

1000m x 58mm

Storage Reel

1000m x 58mm wire

Deck Crane/Davit

3t SWL @ 9 metres Knuckle Boom type

Deck Equipment

2 x Hydraulic Tow Pins/ Karm Forks, SWL 300t. 1

x Stern Roller; 4.2m x 1.8m diam 200t SWL

Deck Fittings/Cutting Equipment

4 x 380/440v Deck Electrical outlets

Two bottles oxygen and one bottle

Propane complete with cutting torch.

Lifesaving Equipment

4 x 15manliferrafts

FiFi System

2 x 1500m³/hr monitors

c/w water spray system

Navigation Equipment

2 x Radar

1 x Autopilot;

1 x Echo Sounder;

1 x GPS;

Radio Communication Equipment

2 x GMDSS INMARSAT-C ;

1 x NAVTEX Receiver

2 x RT Station;

3 x VHF

2 x MF/HF Transceiver;

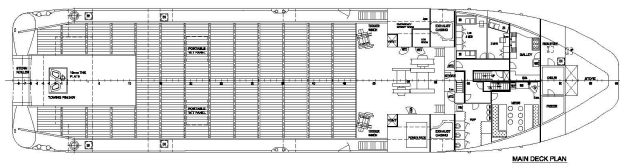
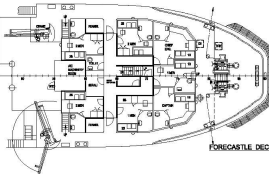
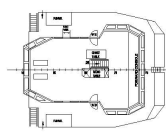
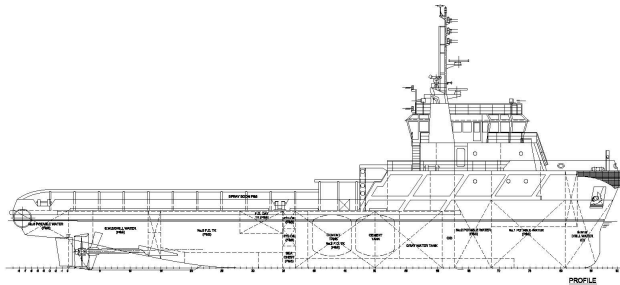
1 x AIS

Other Navigation/communication Equipment

Satellite mobile: Fleetbroadband 150, Fog

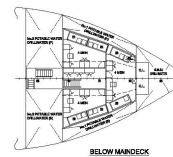
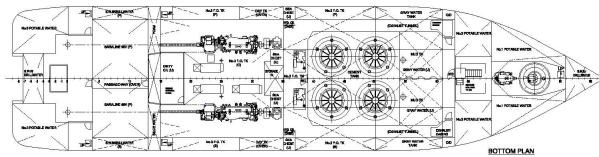
Horn Signal.

All details given in good faith and are believed to be correct, but not guaranteed. This specification is indicative and the actual vessel may be a sister vessel



РАЗМЕРЫ СУДНА:
PRINCIPAL PARTICULARS:

Длина судна:	59,20m
LENGTH O.A.:	59.20m
Длина между перфораторами:	55,00m
LENGTH W.L.:	55.00m
Ширина:	13,00m
WIDTH M.C.D.:	13.00m
Глубина:	8,00m
DEPTH:	8.00m



CMI OFFSHORE	PROJECT	CM ROSE	APPROVE HANDLING
			SUPPLY VESSEL
GENERAL ARRANGEMENT			
SIZE	DESIGN	DRAWN	CHECKED
A3			100000-01
SCALE 1:125	DATE 07.2014	SHEET	OFF
			1