



Name of Vessel

CMV Athos

Port of Registry / Flag

Majuro / Marshall Islands

Year of Delivery

2017

Type

AHTS (DP2)

Classification

+ A1, FFV 1, AH, Offshore Support Vessel ,

Supply, Tow, (E), + AMS, + DPS-2

Length over all (LOA) 65.00m

Breadth (Moulded) 16.00m

Depth (Moulded) 6.20m

Draft (Design) 5.00m

Draft (Scanling) 5.20m

GRT / NRT

2237T / 671T

Performance Speed

13 knots

Bollard Pull 86.62 tons

Accommodation

8 x single berth, 3 x double berth, 9 x 4-berth.

Total berths 50

Cargo Capacities

Deadweight 1,841t

Deck Cargo 600 t

Cargo Deck Design Load 7.0 t/m²

Deck Cargo Space - 447m²

Tank Capacity (approx)

Potable water - 361.4m³

Fuel Oil - 598.6m³

Drill 361m³

Ballast Water - 718m³

Dry Bulk Cargo Tanks - 170m³

Base Oil - 150m³

Mud / Brine - 386m³ (SG 2.5)

Lub Oil - 10m³

Dirty Oil - 10m³

Foam - 10m³

Dispersant - 10m³

Propulsion System

Main Engines

2 x Nijata 2206 KW

Stern Tube & Propeller

2 x fabricated mild steel tubes

2 x stern tube oil tanks

2 x four bladed controllable pitch propellers

Main Generators

3 x 450kw diesel driven alternators

(415V/3/50Hz)

2 x 900kw shaft generator driven by gear

box

Emergency Generator

1 x diesel-driven emergency generator, rated approx 80kw (415V/3/50Hz)

Bilge / Ballast / GS / Fire Pumps

2 x vertical self-priming centrifugal SW pump of 100m³/hr at 70m total head

Bilge Pumps

2 x set capacity 45m³/hr at 30m total head. 1 x daily bilge pump, capacity 2m³/hr at 25m total head

Fuel Transfer Pump

2 x 15m³/hr at 20m head horizontal gear.

Water Cargo Pumps

1 x vertical centrifugal self priming pump - FW capacity 100m³/hr at 70m head

1 x vertical centrifugal self priming pump - DW capacity 100m³/hr at 70m head

Cargo Fuel Pump

1 x vertical self priming screw pump - capacity 150m³/hr at 70m head

Liquid Mud / Brine Pumps

2 x horizontal pumps - capacity 70m³/hr when discharging against pressure of 70MLC at mud density of 2.5.

Emergency Fire Pump

1 x horizontal self-priming centrifugal fixed emergency fire pump of 45m³/hr at 60m head

Engine Cooling System

Lub Oil System for Main/Auxiliary Engines Oily

Bilge Water Separator

1 x MARPOL standard oily water separator complete with pump and oily water discharge alarm. Capacity 1m³/hr with oil content less than 15ppm.

Bow/Stern Thrusters

2 x transverse tunnel CP bow thrusters, each giving a thrust of approx 8t, driven by electrical motor

1 x transverse tunnel CP stern thruster, giving a thrust of approx 8t, driven by electrical motor

Sewage Treatment Plant

1 sewage treatment plant for 50 men

1 sewage pump of 5m³ capacity

Deck Equipment

Anchor Windlass

1 x electro-hydraulic with 2 cable lifters and 2 warping drums, capacities - 10 tonnes at 9m/min for chain cables.

Anchor

2 x AC-14 HHP stockless anchors, stowed in anchor-pockets, each of 1,440kg.

Capstans

2 x electro-hydraulic with pulling force of 10 tonnes at 15m/min.

Towing & Anchor Handling Winch

1 set, high pressure electro-hydraulic driven, double drum, waterfall type. Rated pull at first layer: 150 ton at low speed.

Towing Pin & Shark Jaws

Tugger Winch

2 x electro-hydraulic of 10 tonnes @ 15m/min.

Each with 1 wire drum and 1 warping head c/w 250m x 22mm dia. wire.

Stern Roller

250t SWL, approx 4.4m long by 1.7m diameter.

Deck Crane

1 x electro-hydraulic knuckle crane - SWL 2t at outreach 15m.

Radio and Navigation Equipment

GMDSS Communication A3

Navigation

Daylight signalling lamp, 24V DV

Standard magnetic reflector compass

Autopilot, 3 x Gyrocompass, 2 x radars

Echo sounder - 200 KHz c/w transducer, Speed log - Doppler type, range - 10 to 45 knots

3 x Searchlights - 2,000W, 222/1/50

3 x DGPS

Communication

PA / talkback system

A 24 volt internal automatic telephone system

1 x MF/HF, 250W, voice, DSC & NBDP, ship and shore distress alerts

1 MF/HF DSC watch keeping receiver

2 x 25W VHF, 220/1/50 & 24V DC

2 x VHF watch receiver with DSC decoder

3 x 2-way VHF handheld transceivers, waterproof type.

1 x Navtex receiver, SSAS, 1 x Inmarsat 'C'

EPRI, GMDSS satellite 408 MHz EPRI

2 x SART, GMDSS 9GHz

TV antenna - 14 outlets

External Fire-Fighting System

Fifi System Class 1

Fire Pumps

2 x seawater pumps 1650m³/hr @ 140m head

Fire Monitors

2 x monitors at 1200m³/hr each (one dual barrel water/foam).

Fixed Water Spraying System

Life Saving Equipment

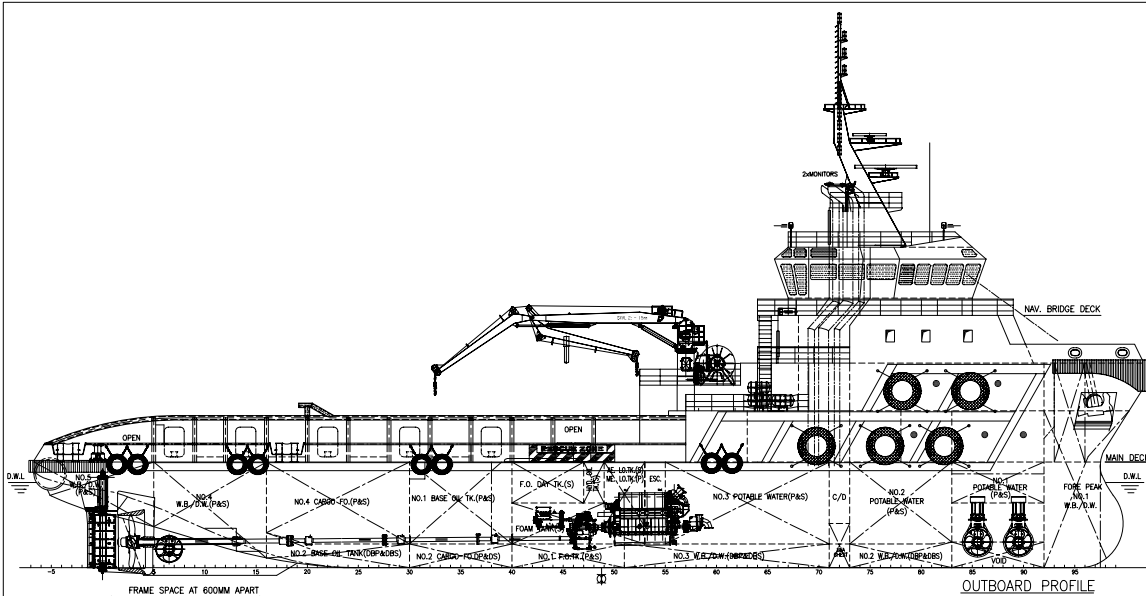
Liferafts - 6 x 25 men inflatable liferafts

Lifebuoys - 8, Lifejackets - 50

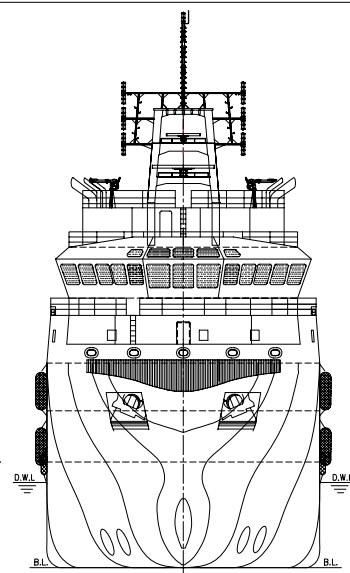
Pyrotechnics - 1 x line throwing apparatus, 12 x parachute distress rockets, 2 x orange smoke signals, 6 x hand flares.

Rope ladders - 2

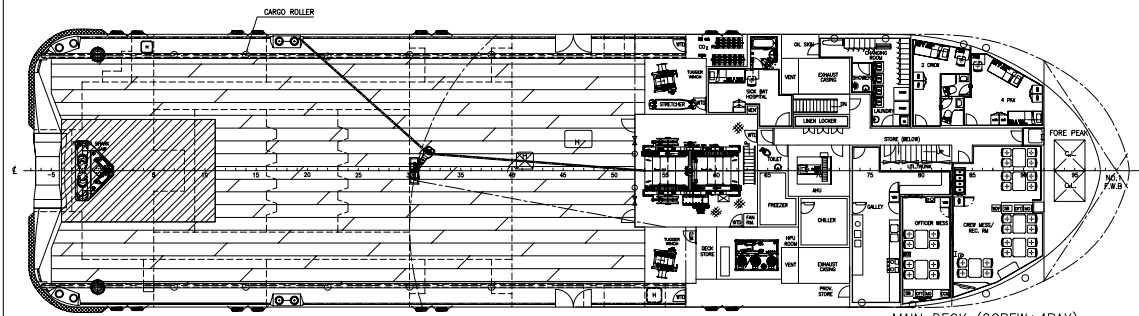
Rescue boat & davit - to carry 9 persons with davit for launching over one side.



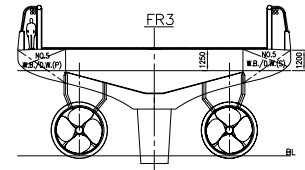
OUTBOARD PROFILE



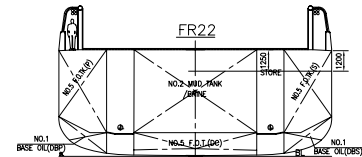
FRONT VIEW



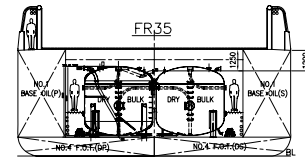
MAIN DECK (2CREW+4PAX)



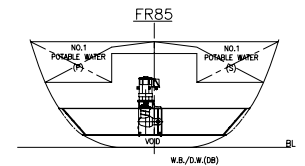
FR3



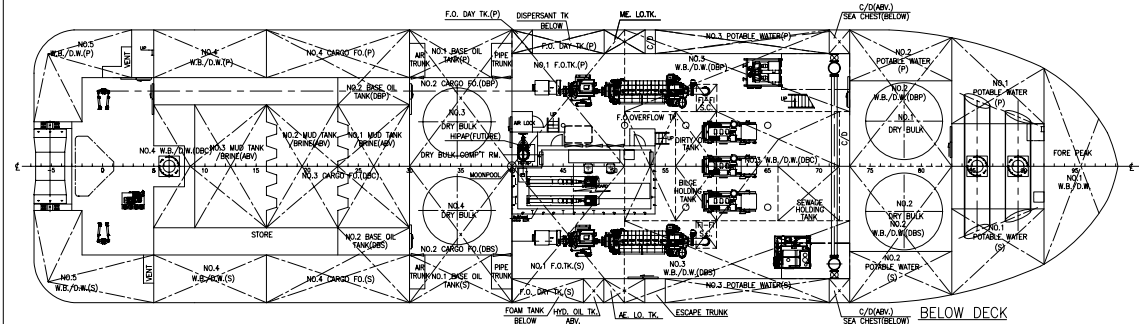
FR22



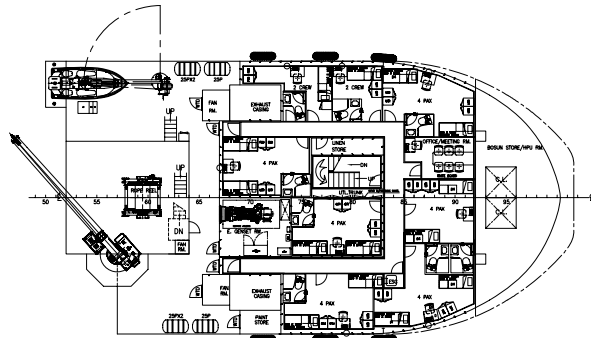
FR35



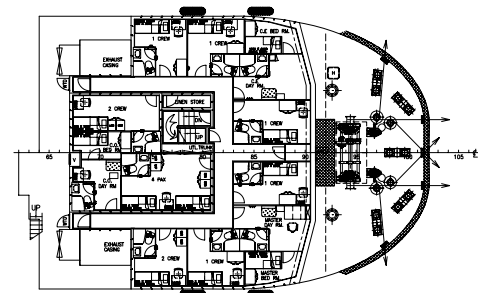
FR85



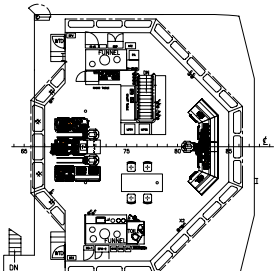
BELOW DECK



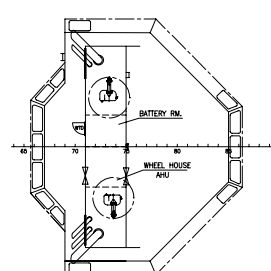
FORECASTLE DECK (24PAX+4CREW)



UPPER FORECASTLE DECK (12CREW+4PAX)



NAV. BRIDGE DECK



COMPASS DECK

PRINCIPAL PARTICULARS

LENGTH OA	65.00 M
LENGTH BP	58.50 M
BEAM MLD.	16.00 M
DEPTH MLD.	6.20 M
DRAFT DESIGNED	5.00 M
DRAFT SCANTLING	5.20 M
COMPLEMENT	50 MEN

MAIN ENGINE	2 x 3,000 PS
TRIAL SPEED	13 KTS
BOLLARD PULL	80 T

CLASS: ABS A1 OFFSHORE SUPPORT VESSEL,
(SUPPLY, AH,TOW,SPS,FFV 1)

- AMS
- DPS-2
- OSR-C1 (option)

APPROXIMATE CARGO CAPACITIES

DEADWEIGHT	1,500 T
CARGO DK AREA	435 M ² @ 7 T/M ²
DECK CARGO	600 T

SHIP FO/CARGO FO	570 M ³
WB/DW	550 M ³
POTABLE WATER	300 M ³
MUD/BRINE	370 M ³
DRY BULK	150 M ³
BASE OIL	150 M ³

65M ANCHOR HANDLING TUG / SUPPLY VESSEL				AS BUILT	
标记	修改单号	签字	日期	船号:	Hull No.
Mark	Revision	Signature	Date	图号:	Draw. No.
设计	Designer			版本:	Scale
校对	Proofreader			页(Pages):	共(1)页, 第(1)页
审核	Confirmed			GENERAL ARRANGEMENT	
审定	Approver				
日期	DATE			<div> 广东粤海海洋工程装备股份有限公司 Guangdong Yueshi Ocean Engineering Co., Ltd. 电话: 020-84952488 Fax: 020-84994006 Email: design@yueshi.com </div>	