

MV HAWA



A 15-5 Menara UOA Bangsar
No 5 Jalan Bangsar Utama 1
59000 Kuala Lumpur, Malaysia
Tel: +603-27103970



PRINCIPAL PARTICULARS

Port Of Registry	Port Kelang
Call Sign	9M2982
IMO No.	9971123
Official No.	337758
Year Built	2023
Class	RINA
Notation	100A1 SSC WORKBOAT MONO G4'Service area' MCH
Type	Fast Crew Boat
Flag	Malaysia
Owner	Surya Nautika Sdn Bhd

DIMENSION

Length Overall	40.4m
Breadth Moulded	7.9m
Depth Moulded	3.6m
Draft	1.9m
GRT	288mt
Deadweight	105mt
Net tonnage	88mt

PERFORMANCE

Speed	29 kts @100% MCR- based on 35 Dead weight tonnes
	28 kts @ 85% MCR-based on 35 Dead weight tonnes
Type of fuel	Marine Diesel

CARGO CAPACITIES

Deck Strength	2 Tonnes/m2
Clear Deck Area	120m2
Fuel Oil	70m3
Fresh Water	30m3
Sludge Tank	0.5m3
Cargo railing height	1m

PROPULSION SYSTEM

Main Engine	3 x 1450 BHP @ 2300 rpm Caterpillar C32
Main Generator	2 x 86 ekW CAT C4.4 3ph 415V @ 50Hz
Bow Thruster	1 x 1 Ton Thrust CUMMINS Hydraulic driven
Steering Gear	2 Hydraulic pump driven by 3 ph electric motor
Propulsion	3 x 5 Bladed FPP of Nickel Aluminum Bronze
Rudders	2 x Marine grade stainless steel

ACCOMMODATIONS

Cabins/Berths	4 x Double, 2 x Single
Passenger Seating	70 persons
Medical Room with Berth	1

*All cabins are fully air-conditioned

DECK EQUIPMENT

Anchor Winch	Electrical, single drum and warping head. 1 ton nominal pull at 9m/min
Anchors Chains	Steel wire rope (length and breaking strength as required by Class) c/w 12.5m x 14mm dia. stud link chain
Anchors	High Holding Power type, 1 x 135kg (approx.)
Bollards	6 x 100mm dia. double-bit / 2 x 100mm dia. single bit

FIRE FIGHTING EQUIPMENT

EXTERNAL

Fire monitor	1 remotely operated unit fitted on the starboard side aft (stern) on the bridge deck.
Fire pump	1 unit Model FP250x350XPC-CCW-NCI 1200m3/hr
Portable Bilge/Fire Pump	1 x Portable Diesel driven pump

INTERNAL

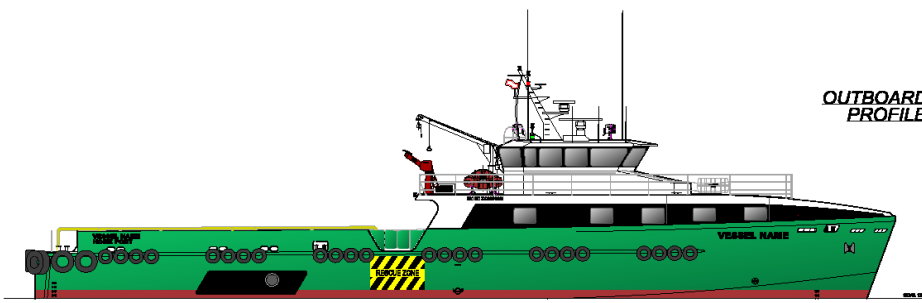
Fixed System in E/R	Aerosol Fire Suppression System
Fire Detection System	Heat and Smoke detectors
Emergency Fire Pump	General Service/Bilge pump

NAVIGATIONAL /COMMUNICATION EQUIPMENTS

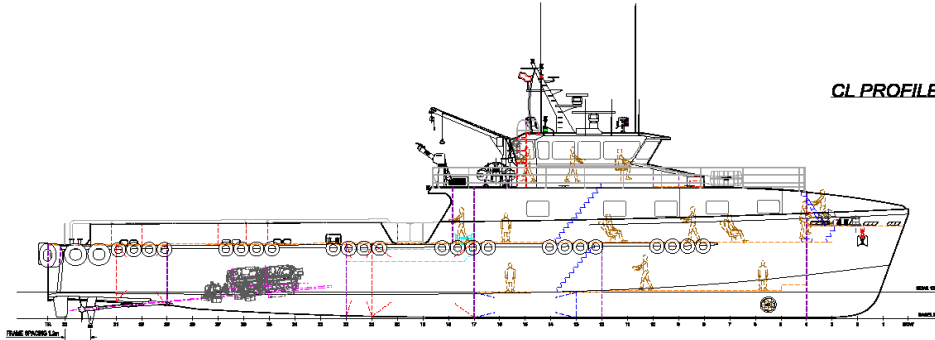
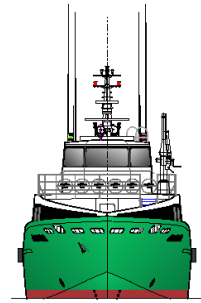
GMDSS	2 x Sailor 7222 VHF DSC Class A SCAN Marine VHF Antenna
SSB	1 x Sailor 6310 MF/HF 150W DSC Class A, SCAN HF7000 SSB Antenna
SART	2 x McMurdo S5 GMDSS 9GHz SART AIS Transponder
EPIRB	1 x McMurdo SMARTFIND E8 Satellite 406MHz EPIRB
Inmarsat C	1 X Sailor 6210 Inmarsat mini-C SSAS
VHF Radio	2 x McMurdo R5 Waterproof GMDSS 2-way VHF Radio
Portable VHF Radio	3 x Motorola XiR P6620i
Satellite Phone/fax	1 x KVH TracPhone mini-VSATsystem ModelV7HTS
Navtex Receiver	1 x JMC Model NT-1800 GMDSS
X Band Radar	1 x Simrad Argus 12U/6X
Echo Sounder	1 x Simrad S2009 Echo Sounder
GPS	1 x Simrad P3007 IMO GPS
Gyro compass	1 x Simrad HS80A Satellite Compass
Autopilot	1 x AP70MK2 Professional Autopilot
Speed Log	1 x Simrad SAL R1A Easy tank
Magnetic Compass	2 x Automatic Deck mount Compass
AIS	1 x Simrad V5035 AIS Class A Transponder

LIFE SAVING APPLIANCE

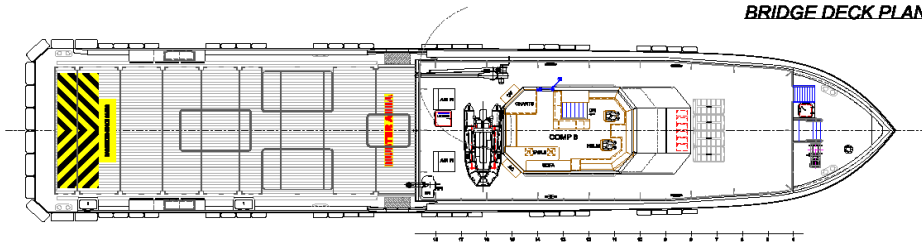
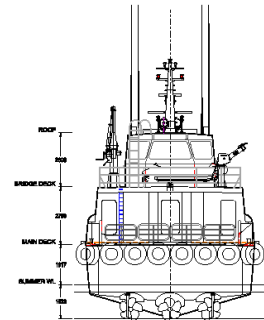
Search Lights	3 x 1000W DHR, 2 Forward, 1 Aft
Liferafts	4 units 30 man Haining HNF-A30 with SOLAS B pack
Lifebuoys	4 pcs
Life jackets	88 pcs
EEBD	2 units
Line Throwing Apparatus	4 projectiles and lines



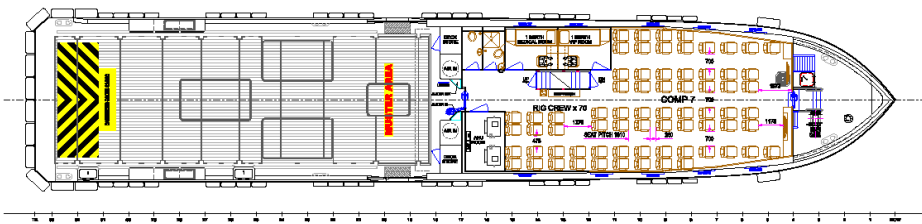
OUTBOARD PROFILE



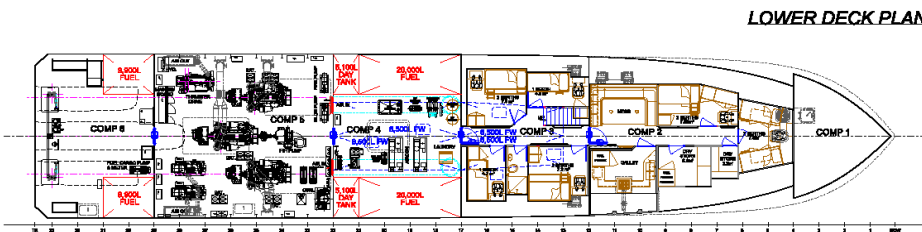
GL PROFILE



BRIDGE DECK PLAN



MAIN DECK PLAN



LOWER DECK PLAN

PRINCIPAL PARTICULARS	
LENGTH O.A.	m 40.4
BEAM MOULDED	m 7.8
DEPTH MOULDED	m 3.8
GRT	288
DRAFT - MAX BL	m 1.7
DRAFT - MAX PROP	m 1.9
CLEAR DECK	m 92
FUEL OIL	m ³ 70
FRESH WATER	m ³ 30
BLACK WATER	m ³ 0.5
PASSENGERS	70
CABINS / BERTHS	7 / 11
DECK STRENGTH	Mm ² 2.0
MAX DEAD WEIGHT	t 106
PROPULSION	hp 4350
BOW THRUSTER	apr. Unruat 1 x 11
SPEED	
AT 100% MCR, 35 dwt	Ma 28.0
AT 85% MCR, 35 dwt	Ma 28.0

PRELIMINARY
FOR REVIEW ONLY

SOUTHERLY DESIGNS
© Southernly Pty Limited, Victoria Australia 2020. All rights reserved.

StrategicMarine
DESIGN SERVICES

FILE: **GENERAL ARRANGEMENT**

PROJECT: **ADM FAST CREW BOAT (FCB)**

DESIGN NO.: **S799-110_BQ-D2**

DATE: **25/01/2022**

BY: **H. PYKE** (DESIGN) **A. TAYLOR** (APPROVED) **A. TAYLOR** (CHECKED)

SCALE: **1 OF 1**

REVISION: **A1**

NO.	ISSUED FOR REVIEW	DATE	BY	APP'D	CHK'D
01	ISSUED FOR REVIEW	25/01/2022	H. PYKE	A. TAYLOR	A. TAYLOR
02	ISSUED FOR REVIEW	25/01/2022	H. PYKE	A. TAYLOR	A. TAYLOR
REV	REVISION DETAILS	DATE	BY	APP'D	CHK'D