



Name of Vessel

ANNIE

Port of Registry / Flag

Malakal Harbor / Palau

IMO Number / MMSI

9429510 / 511100827

Year of Delivery

2008

Type

Robert Allan 'Dogancay Class'
Twin Screw Ocean Going Tug.

Classification

Bureau Veritas.
Tug (Unrestricted Navigation)

Length over all (LOA)

25.25m (24.00m BP)

Breadth / Depth / Draft (Light/Op/Max)

8.6m / 4.0m / 2.97m / 3.40m / 3.80m

GRT / NRT / DWT

224T / 107T / 285T

Clear Deck Space

56.5m²

Speed

12.5 knots

Bollard Pull (Certified)

47.7 metric tonnes

Endurance

21 days

Accommodation

Fully heated & air conditioned for 8 men in four cabins.

Lifesaving

To meet SOLAS requirements

Fire Fighting

Minimax Handwheel Monitor 650m³/hr & 12 bar with self-drenching system.

Fuel

67m³

Fresh Water

31m³

Treated Sewage holding tank

3.8m³

All details given in good faith and are believed to be correct, but not guaranteed.

Main Engines

2 x Caterpillar 3512B medium speed, twelve cylinder diesel engines producing 2376kW (3186bhp) total @ 1800 rpm.

Generators

2 x 71.2kW (89KVA) Stanford Newage UCM274E1 driven by 2 x Volvo Penta D5A-AT diesel engines @ 1500 rpm

M.E. Consumption

8,500 litres MGO and 20 litres lube oil per 24 hours @ full power. 4,000 litres MGO and 10 litres lube oil per 24 hours @ economic cruising speed of 10 knots

Generator Consumption

220 litres MGO and 2 litres lube oil per 24 hours

Propulsion

2 x Reintjes WAF665 5.95:1 reverse reduction gearboxes coupled to lips four bladed 2300mm diameter fixed pitch propellers rotating in kaplan high Performance Kort Nozzles @ 302.5rpm

Fuel Oil Purifier

GEA Westfalia OTC2-02-137 self-cleaning fuel oil purifier.

Steering Gear

Data hidrolik a.s. LP160 Electro hydraulic connected to 4 X High angle (45°) rudders.

Fire Fighting Equipment

Single 600m³/hour water monitor mounted on the aft end of the wheelhouse and 50m³/hour self drenching system.

Anchor Windlass

Data PZC 2601H Electro/Hydraulic, 6 ton @ 12m/min.

Anchors

1 x 425kg HHP stockless anchor

Anchor Chain

1 x 220m 22mm U2 stud link chain

Fendering

Solid rubber pusher bow and tyre fendering system to facilitate ship handling. Rubber rubbing band and tyre protection on both vessel parallel sides.

Towing/Anchor Winch

Data Hidrolik Makina Sanay A.S. Single drum hydraulic winch with spooling gear. Type: DTW8X90M, 90 tonnes brake capacity. 45 metric tonnes line pull @ 11.5 metres per minute. 650m x 44mm wire.

Tow Hook

Data hydraulic DCX disk type. 45t SWL & 90t Test Load.

Towing Pins

Data Hydraulic 8" Twin pins and retractable hook.

Cutting Equipment

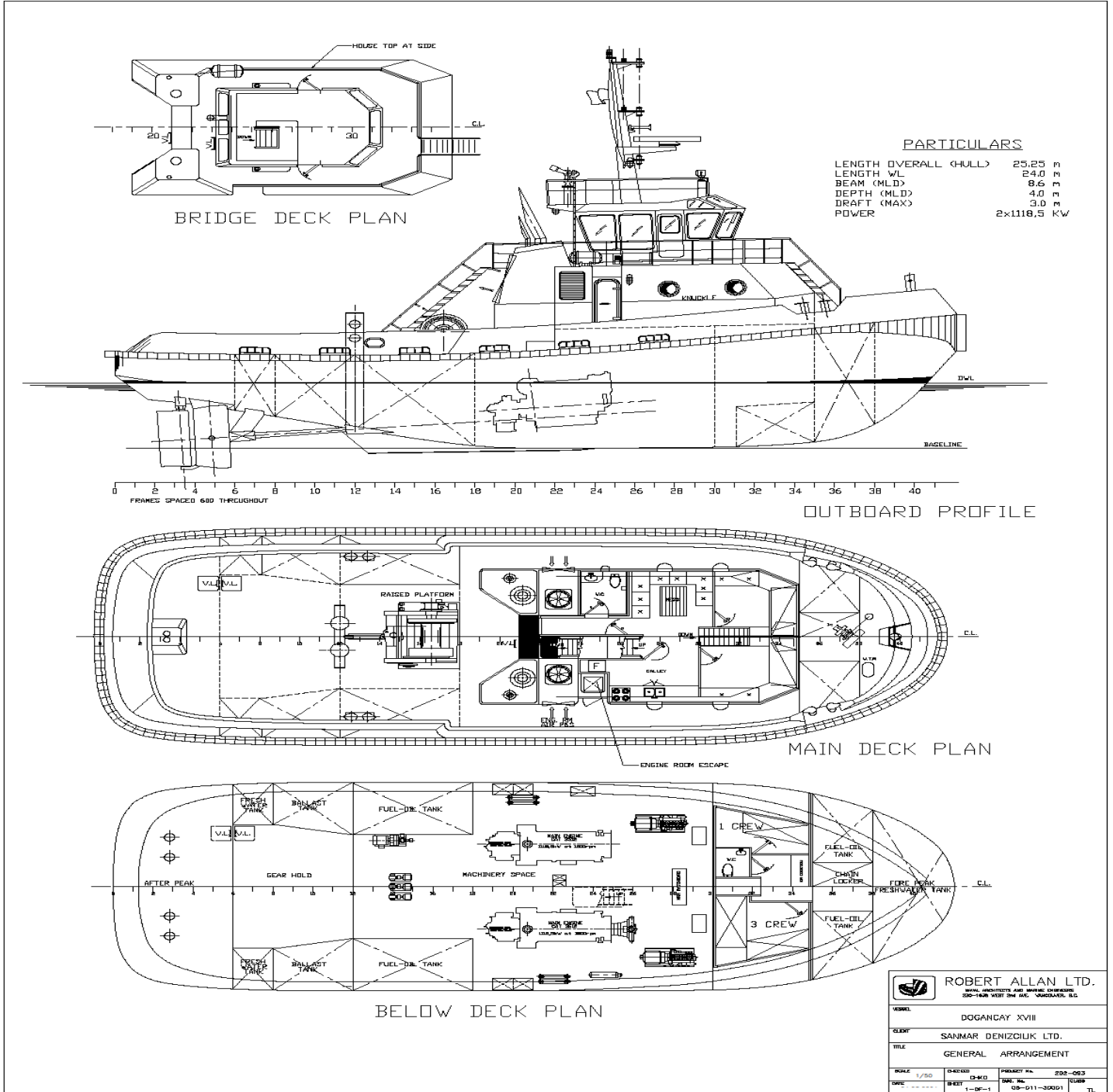
Two bottles oxygen and one bottle Propane complete with cutting torch.


Navigation Equipment

Radar: Simrad
Gyro: Simrad
Autopilot: Simrad
Echo Sounder: Kodon CVS
GPS: Simrad
Anemometer:

Radio communication equipment

GMDSS Sailor 5000 series includes:
1 x SSB Sailor 5150 150W
2 x VHF Sailor
2 x Inmarsat-C T&T 3000
1 x SASS built in INM-C
2 x SART
1 x EPIRB Sailor
3 x Two-way emergency VHF Radio
1 x Navtex ICS
Other Navigation Equipment
Radar, Transponder, P.A. System c/w Fog Horn Signal, Anemometer. Fleet broadband 150.



 ROBERT ALLAN LTD. MARINE ARCHITECTS AND MARINE ENGINEERS 100-100A WEST 5TH AVE. VANCOUVER, B.C.			
MODEL	DOGANCIY XVIII		
CLIENT	SANMAR DENIZCILIK LTD.		
TITLE	GENERAL ARRANGEMENT		
SCALE	DRAWING	PROJECT NO.	208-083
DATE	1-7-00	DRG. NO.	0089
	REVIT	1-01-1	08-011-30001 TL

