



Name of Vessel

CM Pecos

Port of Registry / Flag

Aktau / Kazakhstan

IMO Number

9741217

Year of Delivery

2014

Type

Twin Screw Ocean Going Tug.

Classification

RMRS - KM * TUG

Length over all (LOA) 30m

Breadth

9.6m

Depth

4.6m

Draft (Light)

3.4m

GRT / NRT / DWT

309T / 92T / 216T

Clear Deck Space

90m²

Speed

11.5 knots

Bollard Pull (Certified)

40.75 metric tonnes

Endurance

21 days

Accommodation

Fully heated & air conditioned for

10 men in five cabins. **Lifesaving**

To meet SOLAS requirements

Fire Fighting

To meet SOLAS requirements

Tank Capacities

Fuel

194m³

Sewage

59m³

Fresh Water

68m²

Main Engines

2 x YANMAR 8N21A medium speed, eight cylinder diesel engines producing 2354kW (3200bhp) total @ 850 rpm.

Generators

2 x 139kW (162.5KVA) Stanford UG M274HI driven by 2 x Volvo D7A-ATA diesel engines @ 1500 rpm

M.E. Consumption

8,000 litres MGO and 20 litres lube oil per 24 hours @ full power. 5,000 litres MGO and 10 litres lube oil per 24 hours @ economic cruising speed of 10 knots

Generator Consumption

240 litres MGO and 4 litres lube oil per 24 hours

Propulsion

2 x YANMAR YXH 2000C 3.031:1 reverse reduction gearboxes coupled to four bladed 2300mm diameter fixed pitch propellers rotating in high Performance Kort Nozzles @ 280.5rpm

Bow Thruster

2 tonne tunnel thruster

Sewage Treatment Plant

CKST 12 PERSON Marpol Compliant

Steering Gear

Independent Electro hydraulic, 3T torque

Anchor Windlass

Marine Equipment Ltd. Electro/Hydraulic type ME 2.1THWL 22C2506 ton @ 12m/min.

Anchor Chain

2 x 570kg stockless Bower anchors

Anchor Chain

2 x 200m 22mm U2 stud link chain

Fendering

Solid rubber pusher bow and tyre fendering system to facilitate ship handling. Type fenders throughout vessel length.

Towing/Anchor Winch

Marine Equipment Ltd. Single drum hydraulic winch. Type; ME 45THTW 120 tonnes brake capacity. 50 metric tonnes line pull @ 10.6 metres per minute. 700M x 44mm wire

Spare Tow Wire

600m x 44mm wire on reel

Navigation Equipment

Radar: 2 x Furuno FR-1932MK II

Echo Sounder: Fuso

Autopilot SIMRAD AP35

Weather Fax Furuno

Sat Compass Simrad MX575A

GPS: Furuno GP 32

Radio communication equipment

GMDSS Sailor 5000 series includes: 1x SSB Icom 710

2x VHF Simrad

GMDSS Area A1/2/3

1x SASS built in INM-C

1x SART McMurdo S4

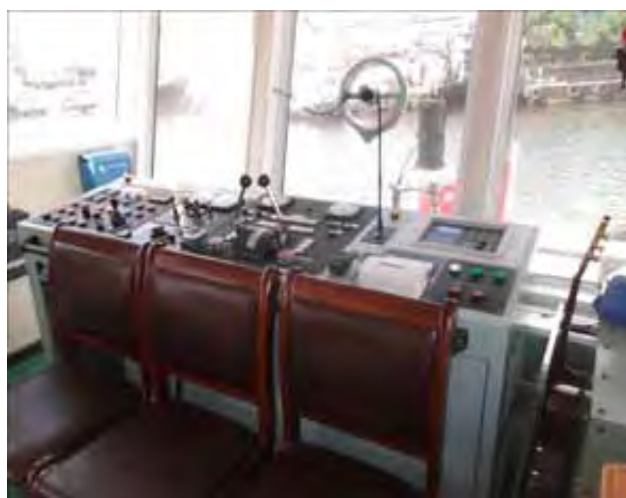
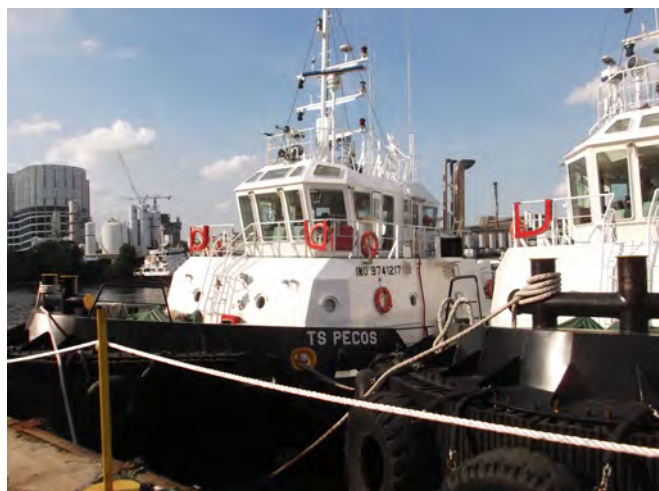
1x EPIRB McMurdo E5

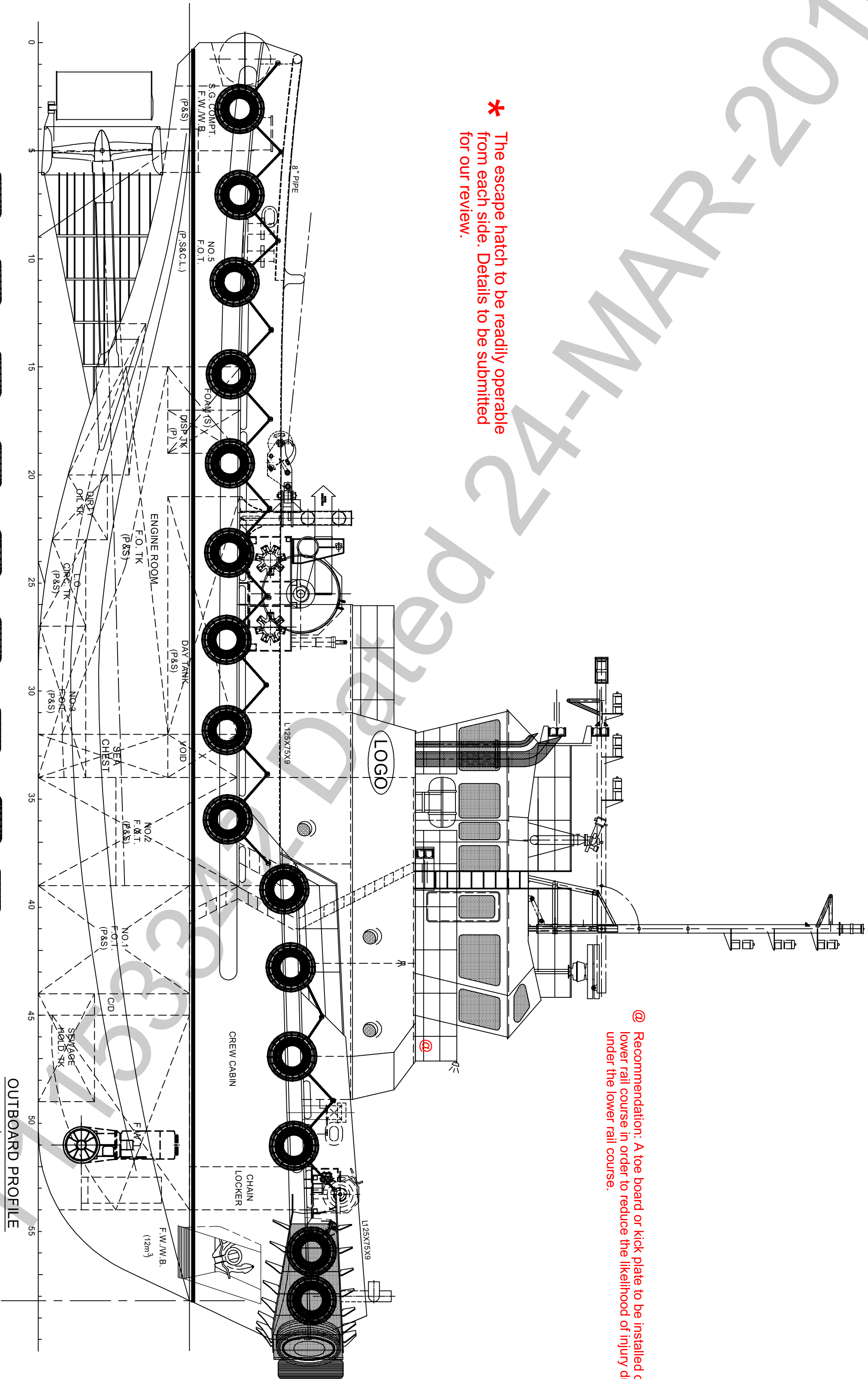
3x GMDSS VHF Radios

1x Navtex McMurdo

Other Navigation Equipment

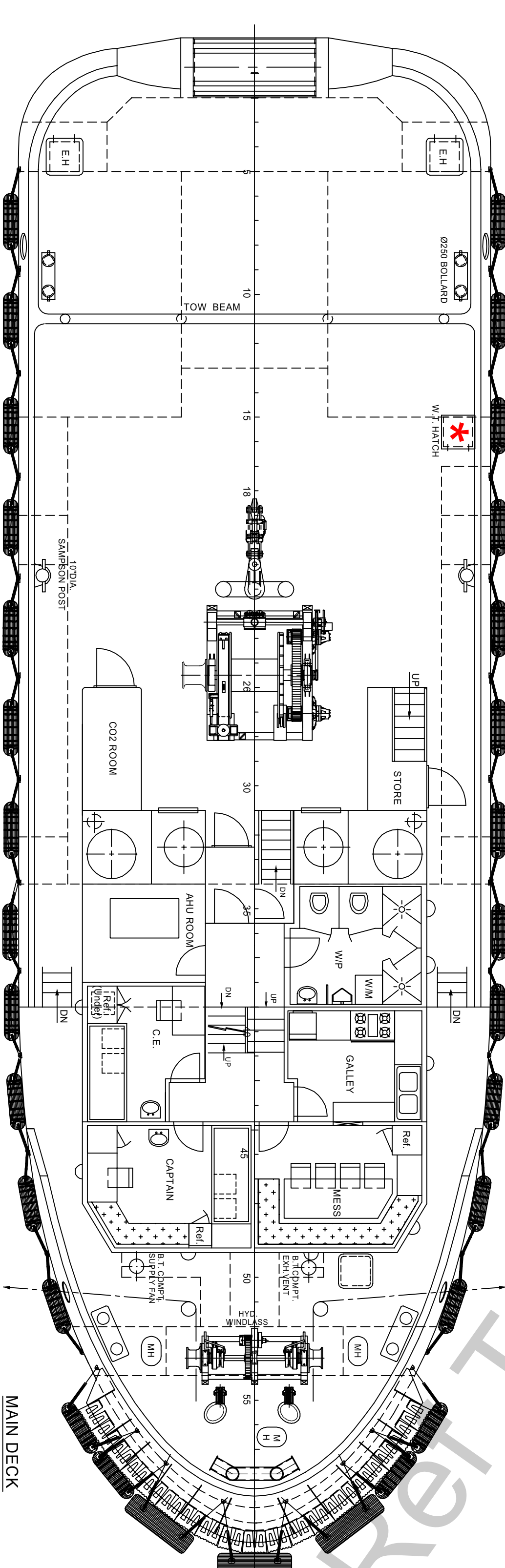
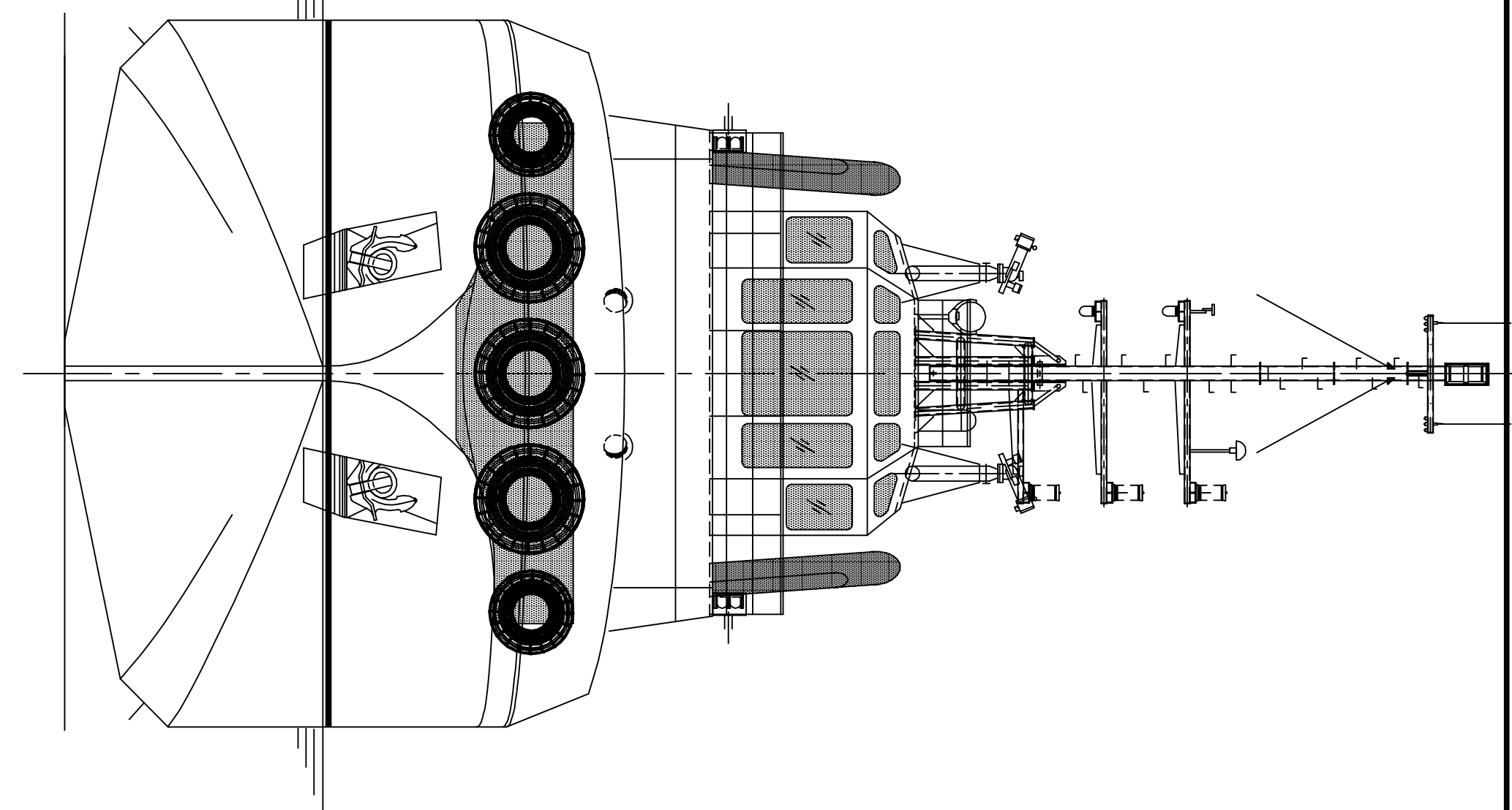
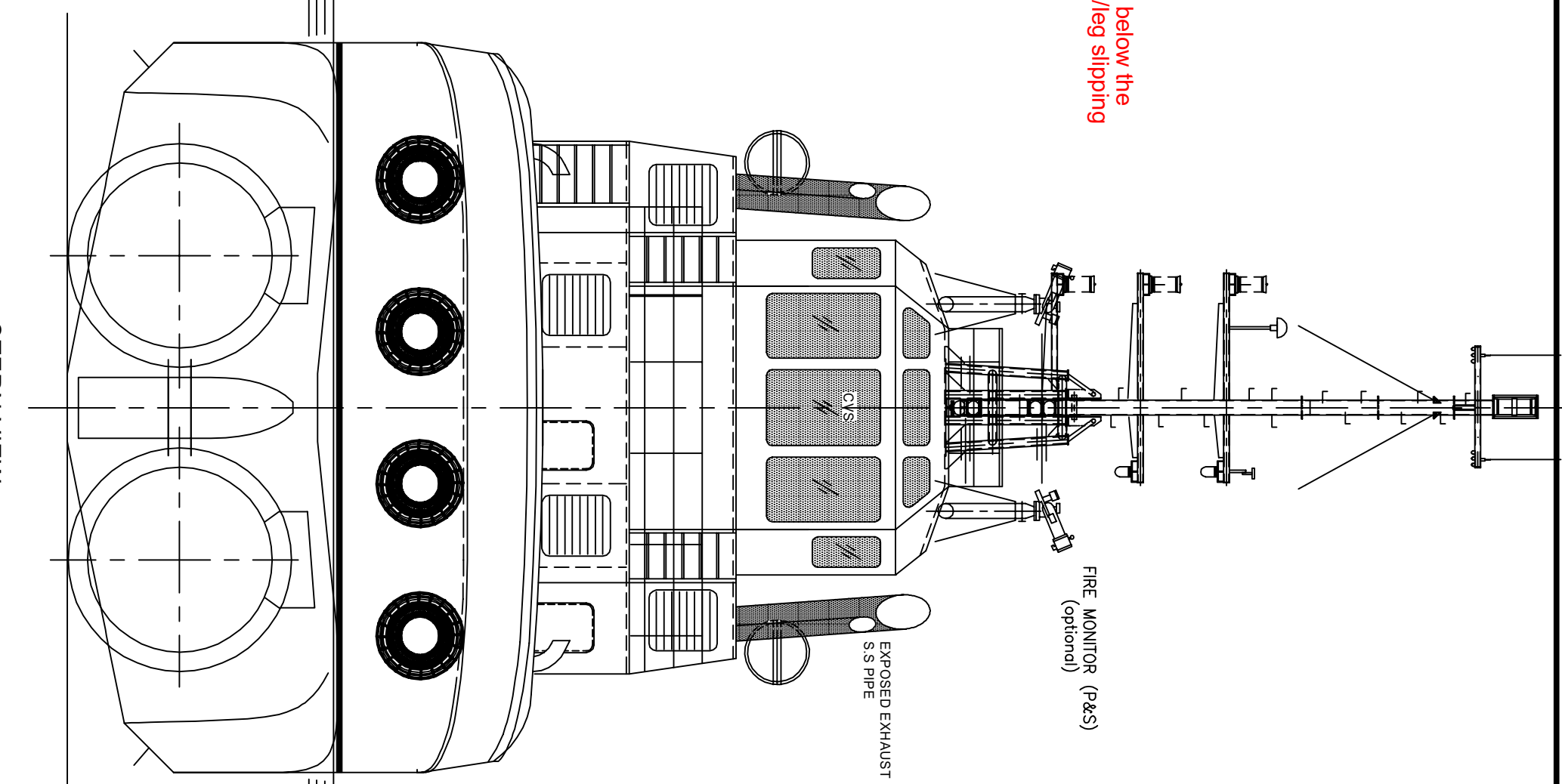
Radar, Transponder, P.A. System c/w Fog Horn Signal, Anemometer.



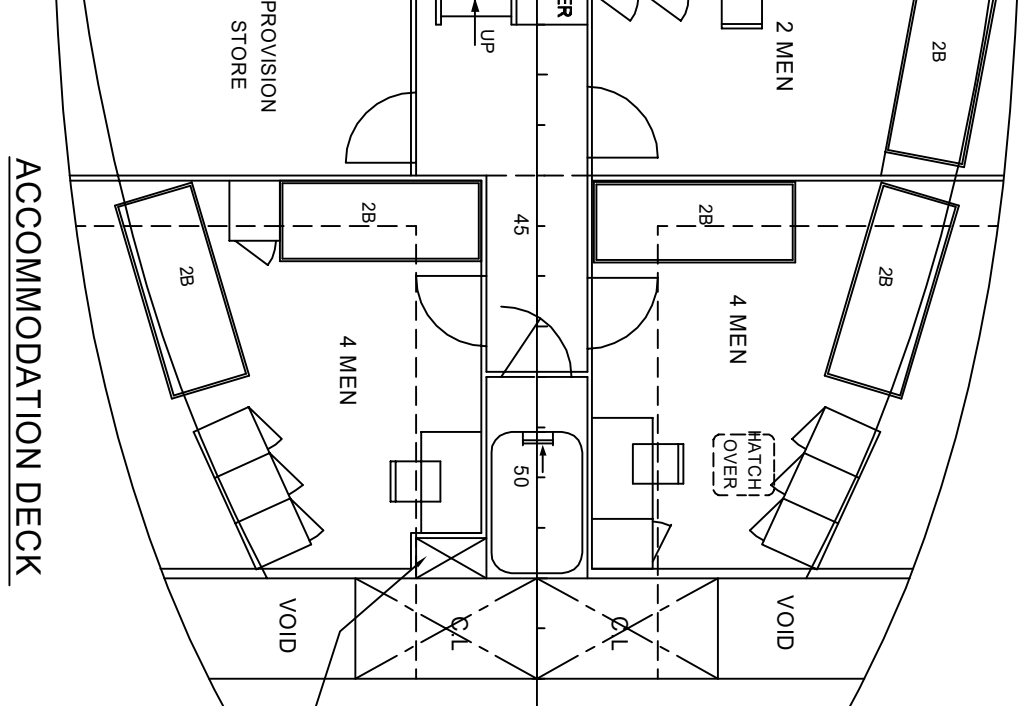
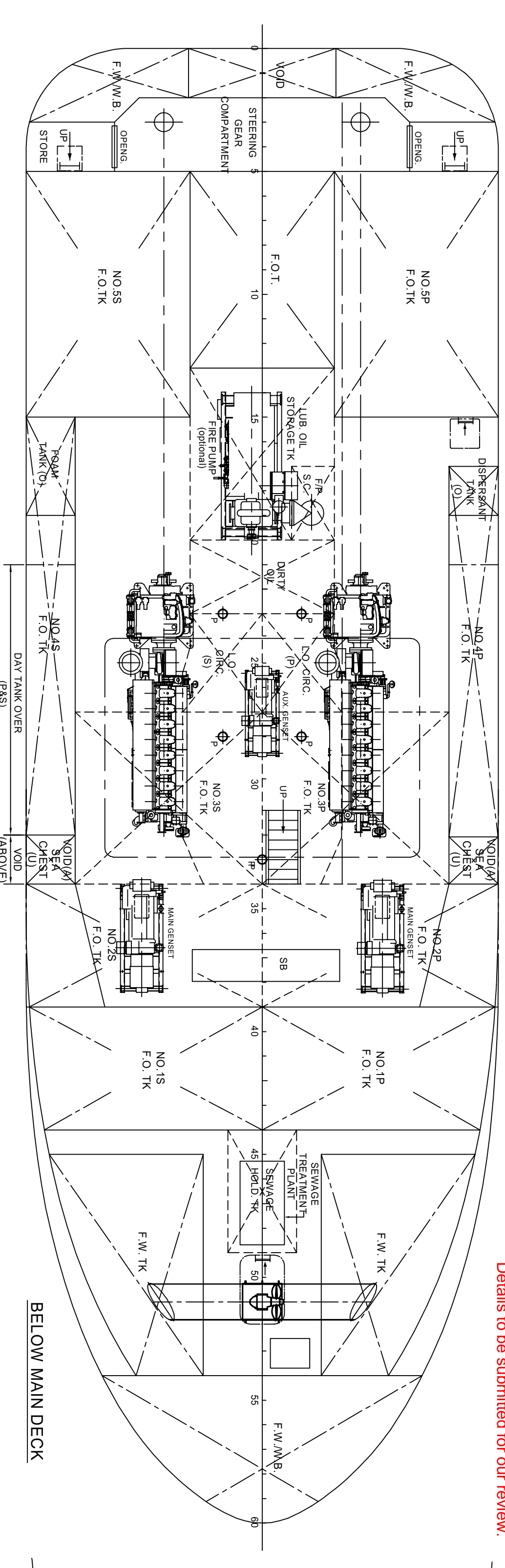
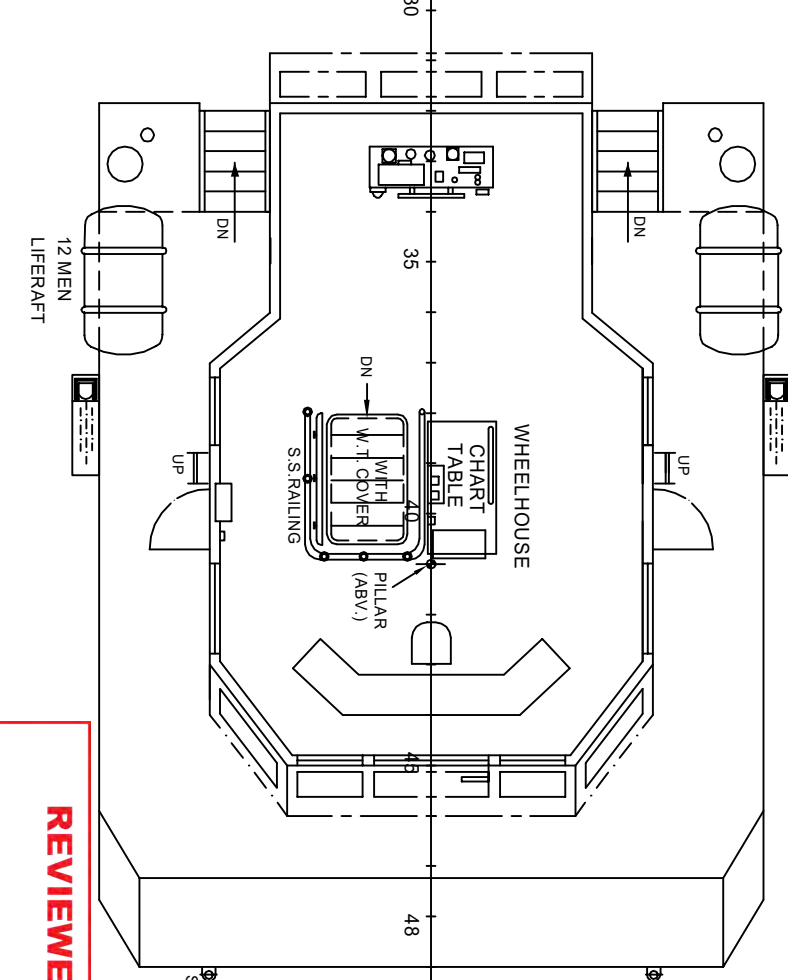
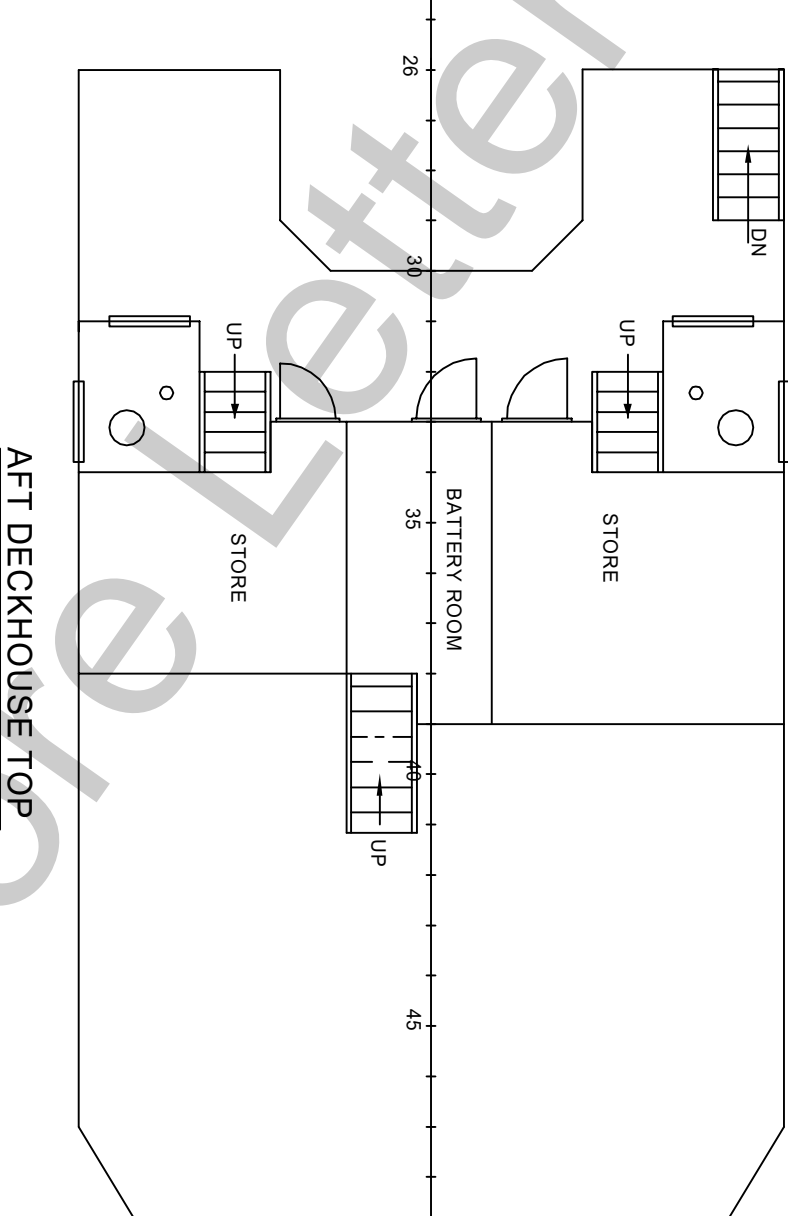


@ Recommendation: A toe board or kick plate to be installed on the deck below the lower rail course in order to reduce the likelihood of injury due to a footleg slipping under the lower rail course.

* The escape hatch to be readily operable from each side. Details to be submitted for our review.



Doors in WT BrDs to comply with 3-2-77 of SVR Under 90m.
Details to be submitted for our review.



PRINCIPAL PARTICULARS
LENGTH O.A. @ 0.85D 30.00m
LENGTH W.L. 29.29m
BEAM MLD 9.60m
DEPTH MLD AMIDSHIP 4.60m
DRAFT max. approx. 3.50m
DRAFT max. approx. 4.00m
COMPLEMENT 12 MEN
FRESH WATER approx. 30m³
FUEL OIL approx. 250m³
F.W./W.B. approx. 39m³

SEE ABS LETTER FOR COMMENTS			
Flag: Republic of Singapore			
GRT <500			
REVIEWED			
Details of this review are as indicated in the ABS letter			
WARTSILA			
WARTSILA SHIP DESIGN SINGAPORE PTE. LTD.			
General Arrangement			
30m T.S. TUG			
TITLE: General Arrangement			
OWNER: POET SHIPBUILDING & ENGINEERING PTE LTD			
YARD NO. POET 1834			
CLASS: A.B.S.			
POET 1835			
DATE: 11.06.12			
AMENDED TO ADD FIRE MONITOR AS PER OWNER REQUIREMENTS			
MODIFICATION			
SHIP: 30m T.S. TUG			
DRAWN: ZHANI			
CHECKED: LEE			
SCALE: 1:75			
DRAWING NO. 40432/G-1			
REV: A			