



Name of Vessel

Lily

Port of Registry / Flag

Puerto La Cruz / Venezuelan

Year of Delivery

2012

Type

RAstar 3200 Class Pusher Tug

IMO # / MMSI

Leo: 9652143 / 566671000

Lily: 9652155 / 566672000

Classification

ABS +Hull +ABCU, FiFi 1, ESCORT, Oil Recovery Capable

Length over all (LOA)

32.0m

Breadth / Depth / Draft (Max/Design)

12.80m / 5.27m / 5.80m / 4.19m

GRT / NRT

497T / 149T

Clear Deck Space

+/-50m²

Speed

13.2 knots (12knots economical)

Bollard Pull (Certified)

66.4 metric tonnes Ahead

61.2 metric tonnes Astern

Endurance

21 days

Accommodation

Fully heated & air conditioned for 10 men in four cabins.

Lifesaving

To meet SOLAS requirements

Fire Fighting

To meet SOLAS requirements

Fuel

187m³

Fresh Water

38m³

Black & Grey Water holding tanks

8.8m³

Main Engines

2 x Niigata 6L28HX diesel engines producing 1838kW (@ 750 rpm.

Generators

2 x 130kW Volvo diesel generators

Propulsion/Steering

2 z Z-Peller Niigata ZP-41A

Fendering

Solid rubber pusher bow and tyre fendering system to facilitate ship handling. Solid rubbing band and tyre protection on both vessel parallel sides.

Forward Towing Winch

81 tonne @ 13m/min first layer (IBERCISA)

27.2 tonne @ 40m/min 1st Layer

Brake Holding

200 tonne

Aft Towing Winch

54.3 tonne@ 9.1m/min f1st layer (IBERCISA)

14.7 tonne @33m/min 1st Layer

Brake Holding

178 tonne

Deck Machinery

Smith Berger Tow Pins and Roller 12T214-1NB

Deck Crane 2.17 tonne @8m Outreach

Cutting Equipment

Two bottles oxygen and one bottle Propane complete with cutting torch.

Navigation Equipment

Radar 1: fitted

Radar 2: fitted

Sat Compass: fitted

Echo sounder: fitted

GPS Navigator: fitted

Mag Compass: fitted

AIS: fitted

Communication Equipment

GMDSS: A3 , fitted

Navtex: fitted

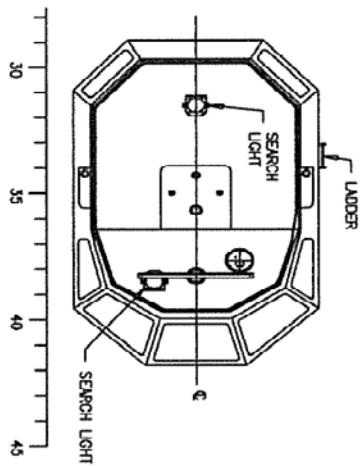
Emergency VHF: fitted

Hand held VHF: fitted

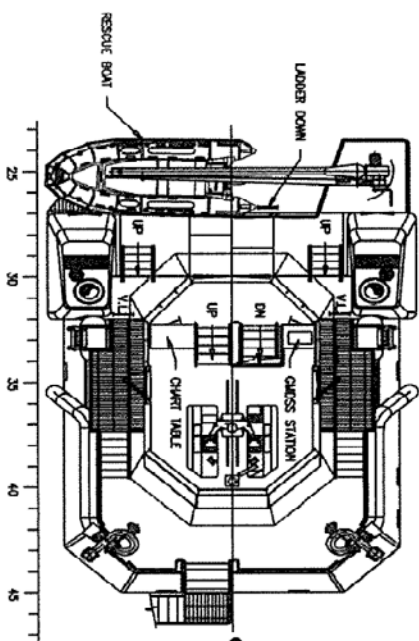
Other Navigation Equipment

Autopilot: fitted. Fleetbroadband 150

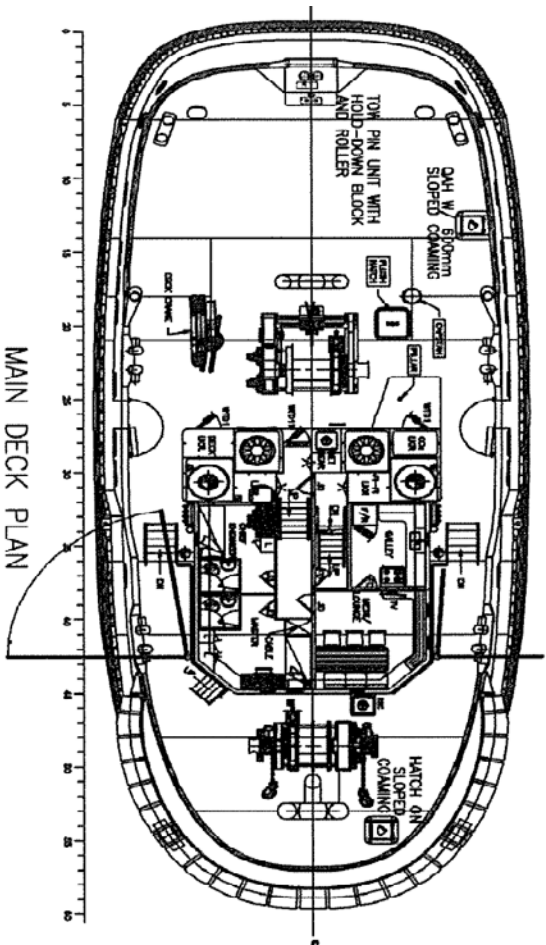
Rastar 3200 Class ESCORT TUG



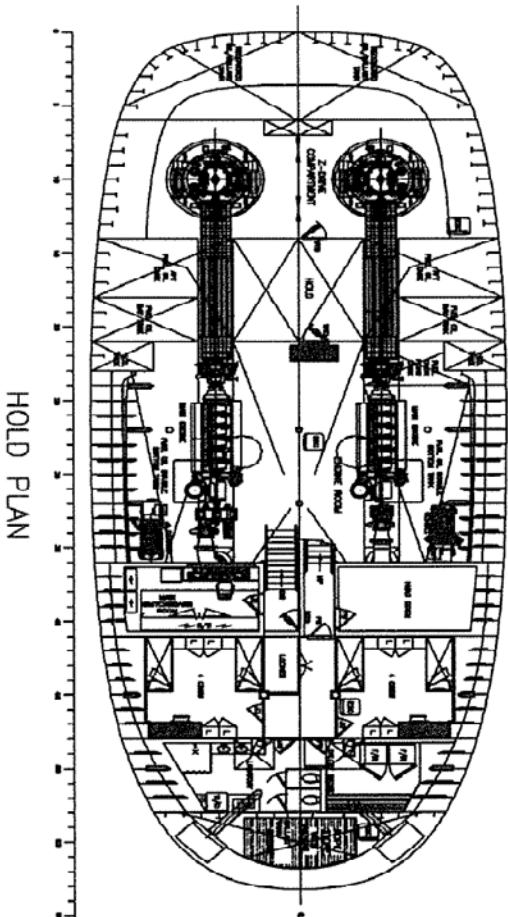
WHEELHOUSE TOP PLAN



BRIDGE DECK PLAN



MAIN DECK PLAN



HOLD PLAN